

# WELCOME

## COMPANY PROFILE



**SURTEC AND PLAMEX CO.,LTD.**

# SURTEC KARIYA GROUP



SURTEC KARIYA GROUP are 10 branches in 8 countries. Our business are plating and surface treatment.



# 1) WHAT IS SURTEC & PLAMEX

## 【SURTEC KARIYA Co.,Ltd.】

SURTEC KARIYA is a plating company in Aichi. That was founded in 1950. There are 3 factory in Aichi and 8 overseas bases in 7 countries.

Head Factory : Kariya city , Aichi

Ogakie Factory : Kariya city , Aichi

Ohtsuzaki Factory : Kariya city , Aichi

## 【Aichi Pref.】

Toyota Motor

Denso

Aisin Seiki ( Aisin AW ) , Advics

Shinnichi Kogyo ( Yutaka )

Oitcs , Fujita Rashi

Sato Press , Itoh Seiko

## 【Nearby Pref. of Aichi】

Mie Seiki ( Mie ) , Sanko ( Nagano )

*SURTEC*

Nagaoka Factory  
Nagaoka city , Niigata

Head Office  
Ota-ku , Tokyo

Yokohama Factory  
Yokohama city , Kanagawa

## 【PLAMEX】

PLAMEX is a manufacturer of Cu plating on printed circuit board and has production plants in Yokohama and Nagaoka. The company was founded on 1949.

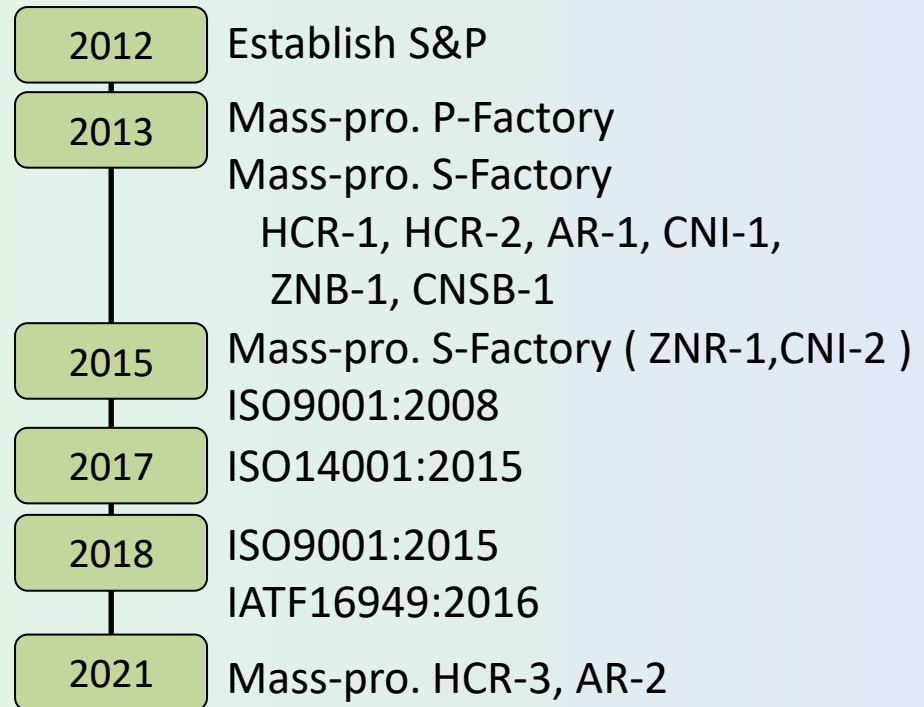
*PLAMEX*

SURTEC & PLAMEX is a plating manufacturer that has entered the Thai market through a joint venture between the two companies:

## 2) COMPANY OVERVIEW

Location	304 Industrial Park 7 Prachinburi
Land Area	35,000 m <sup>2</sup>
Floor Area	11,200 m <sup>2</sup>
Establishment	March 28, 2012
Capital	168,000,000THB (4.5億円)
Share Holders	Surteckariya Co., Ltd. (66.7%) Plamex Co., Ltd. (33.3%)
President	Tsuyoshi Morioka
Directors	Ka.Takeuchi, Ko Takeuchi, A.Ohashi, S.Satomi, Y.Atobe
Employees	403 (As of Apr 2023)

### 【 Company History 】



YST 19KI , 20KI  
COST AWARD

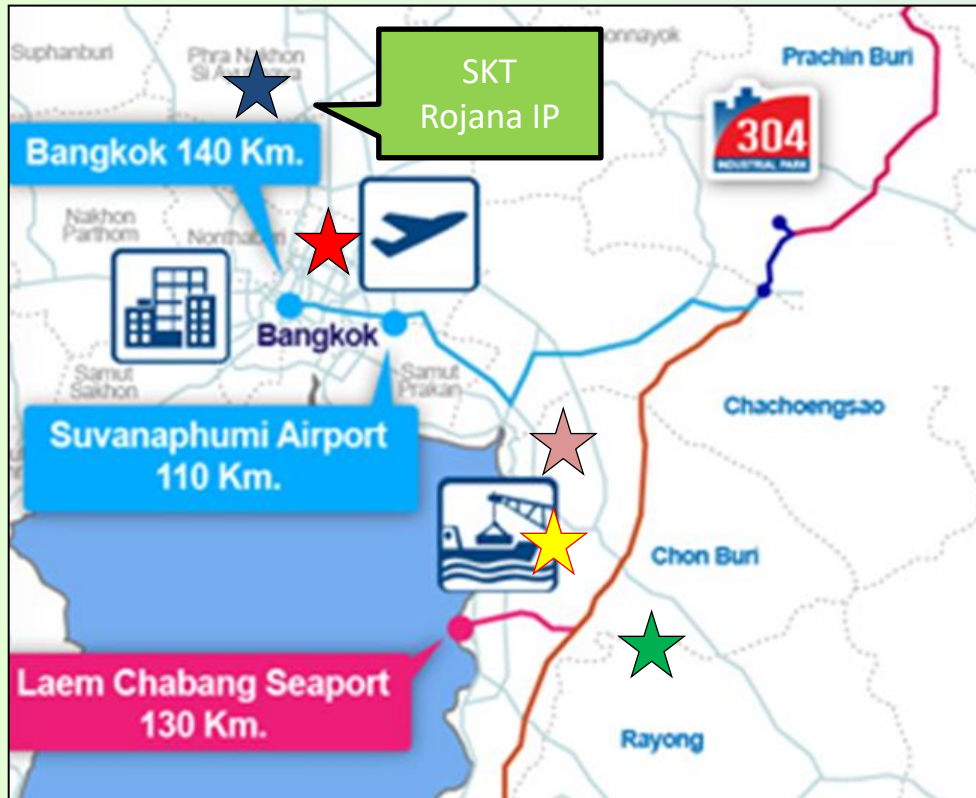


MTA FY'18  
BEST DELIVERY  
AWARD



MTA FY'21  
ZERO DEFECT  
AWARD

### 3) COMPANY LOCATION



#### 【304 INDUSTRIAL PARK 7】

After the Ayutthaya flood on Y2011, S&P was established in Prachinburi as a second base to avoid risks. Located along National Highway 304, which is convenient for access from Bangkok, it is an area where products can be transported to Bangkok, Suvarnabhumi International Airport, Laem Chabang Port, about 2 hours.

#### 【 Our Customers 】



##### 304 IP7

SPK, STP, YST, YMT



##### Chonburi

SDM, ITOH, FRT, MTA,  
ANSCO, E&H



##### Pinthong

MST, IKEDA



##### Rayong

OTICS, SAGAMI



##### Ayutthaya

SANKO, NPT



##### Bangkadi IP

DRACO

# 4) 304 INDUSTRIAL PARK 7

## 304 INDUSTRIAL PARK 7



### 【304 INDUSTRIAL PARK 7】

Number of company : 97 Company

#### 1. Our customers

SATO PRESS KOGYO(THAILAND)CO.,LTD.

SIAM TAGA PRECISION CO.,LTD.

YS-TECH(THAILAND)CO.,LTD.

YUHARA MANUFACTURING CO.,LTD.

#### 2. Other company

CANON PRACHINBURI(THAILAND)CO.,LTD.

OJI PAPER(THAILAND)CO.,LTD.

PRIMAHAM CO.,LTD.

SIAM AISIN CO.,LTD.

THAI KOITO CO.,LTD.

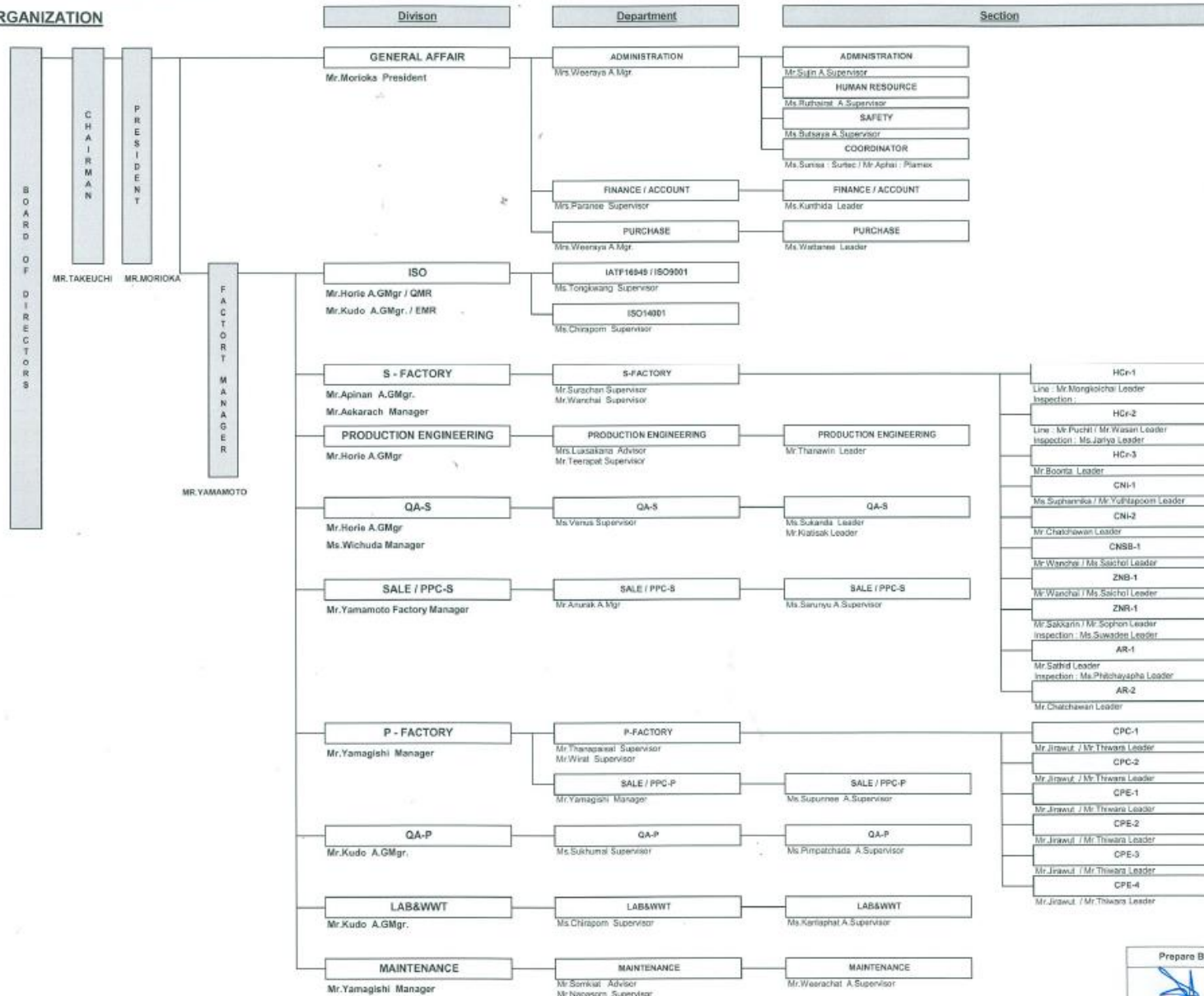
TOSHIBA SEMICONDUCTOR(THAILAND)CO.,LTD.

# 5) ORGANIZATION

SURTEC & PLAMEX CO., LTD.

Effective Date : 16/02/2023

## ORGANIZATION



Prepare By	Approve By
DATE : 14/02/2023	DATE : 14/02/2023



## 6) BUSINESS

Plating Type	Equipment	Unit	Main Purpose
Electro Plating	Copper Plating (PCB)	4	Soldering/Conduction
	Hard Chromium Plating ( GDP head )	1	Anticorrosion
	Hard Chromium Plating (Rash adjuster, INJ, GDP parts )	3	Hardness/Wearability
	Zinc Plating ( Barrel, Rack )	2	Anticorrosion
	Copper Nickel Tin Barrel, Acid cleaning	1	Anticorrosion/Soldering
Electroless Plating	Electroless Nickel Plating	2	Hardness/Wearability
Others	Anodizing (Hard / Corrosive)	2	Anticorrosion/Hardness



# 7) OTHER FACILITIES

## WASTE WATER TREATMENT



## SCRUBBER



## RO WATER SYSTEM



## DI RECYCLE SYSTEM



# 8) LABORATORY



## 1. Chemical concentration

- 1) Titration  
(Normal chemical)
- 2) AAS  
(Heavy metal)
- 3) UV Photometer  
(Heavy metal)
- 4) pH Meter  
(pH)

## 2. Surface analysis

- 1) SEM/EDX

ATOMIC ABSORPTION  
SPECTRO PHOTOMETER



UV SPECTRO  
PHOTOMETER



PH METER



SEM/EDX





# 9) MEASURING INSTRUMENTS (1)

## 1. Thickness

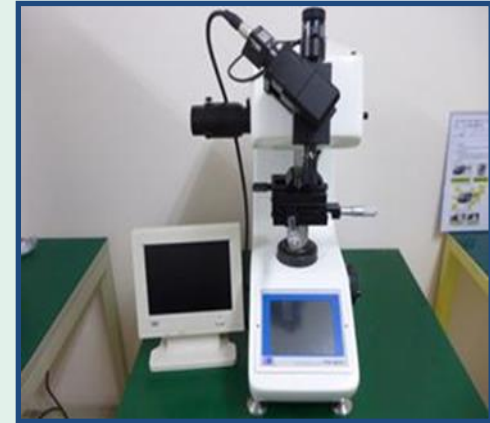


X-Ray Thickness Tester



Fischer Scope

## 2. Hardness

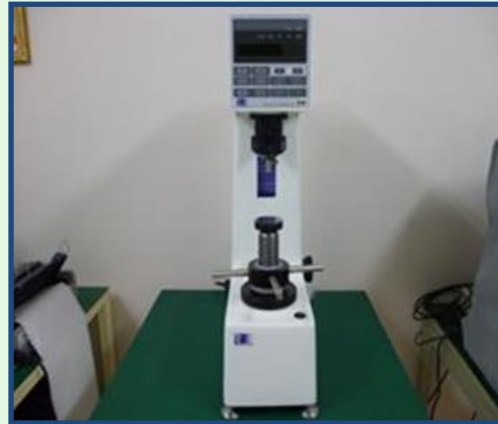


Hardness Tester

## 3. Adhesion



Heat Shock



Rockwell Hardness Tester



Scratch Machine

# 10) MEASURING INSTRUMENTS (2)

## 4. Coercive Force

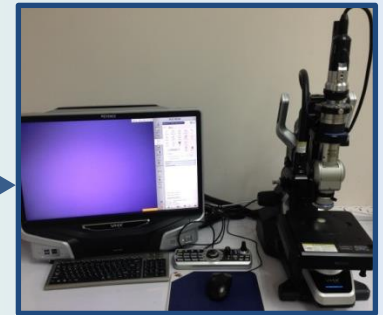


HC Meter

## 5. Corrosion Resistance



Salt Spray Test



Digital Microscope

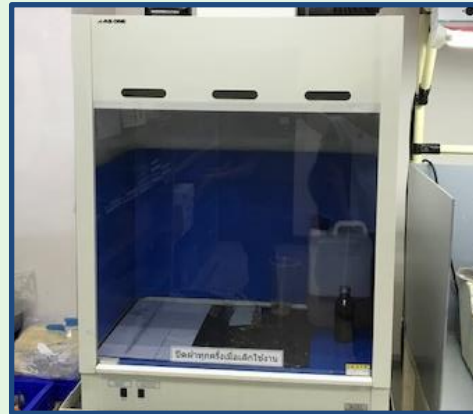


SEM/EDX

## 6. Cross section



Cutting



Resin



Polishing